

# Evolution

World's Most Advanced Serger



FOR THE LOVE OF SEWING

## The Evolution features these 13 serger patents:

### ExtraordinAir™ Threading

With just a gust of air, ExtraordinAir takes thread through all loopers instantly. Threading has never been this fast, easy or extraordinary.



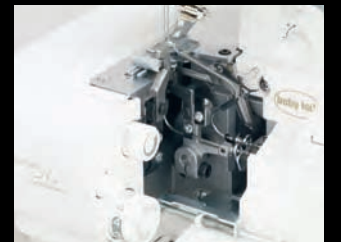
### Automatic Thread Delivery System

Set the Evolution to the type of stitch you want and serge. The Evolution will deliver a balanced stitch on any fabric with any type of thread. It even goes from one fabric type to another without skipping.



### Tubular Loopers

Imagine no exposed thread and no thread guides. The Baby Lock Evolution allows you to thread in any order. Set the Evolution to the type of stitch you want and serge.



### Looper Drive System

This exclusive Looper Drive System prevents loopers from becoming misaligned or out of time, reducing the possibility of major looper damage. This protects your machine from needing repairs, allowing you to serge worry free!



### Advanced Knife Driving & One-Way Clutch System

Baby Lock created a knife system with a larger cutting bite that allows thicker fabrics to be cut with ease and increased visibility.



### Full-Featured, Single Unit Differential Feed

Baby Lock took the differential feed mechanism to a new level by adding a single unit feed dog mechanism. This ensures stronger feeding as well as more consistent gathering on all fabrics.



### Dial Adjustable Stitch Length & Automatic Rolled Hem

Stitch length can be easily adjusted on a Baby Lock serger using one dial. This dial includes an Automatic Rolled Hem setting that will retract the built-in stitch width finger for a rolled hem finish.



### Fabric Support System

Baby Lock's ExtraordinAir sergers include a Fabric Support System to keep stitches flat and balanced, no matter what speed, fabric or stitch you choose. The built-in stitch fingers actually move with the knife blade, adjusting the seam consecutively with the cutting width.



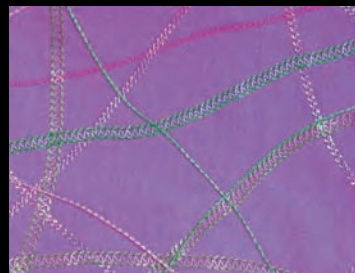
### Vertical Needle Penetration

While most machines use slanted needles that push and damage fabric, Baby Lock's needles are set vertically and sew directly up and down. This exclusive feature protects your fabric and prevents needle deflection.



### Chain/Cover Tension Disks

Baby Lock revolutionized the cover stitch with the Evolution, which functions include chain, cover, and triple cover stitches. All three cover needles are controlled by one tension dial, so you can save time with one simple adjustment.



### 8/7/6 Thread Stitch Capacity

The Evolution is the only serger with 8 threads, providing more stitch combinations than ever before - 87 in all! The Evolution was also the first serger in the world to combine overlocking and cover stitching in the same operation.



### Cover Stitch Chaining Off

Baby Lock has made cover stitching easy to start or stop by automatically chaining off the cover stitch. What's more, the Evolution sews through heavier fabrics better than most cover stitch machines.



### Thread Delivery Unit for the Wave Stitch

For a stitch as unique as the Wave Stitch, Baby Lock wanted to ensure that each one would be even with the next. To do so, they created a thread delivery unit to give each one a flawless look.



## Introducing the Evolution serger from Baby Lock

The advanced 8-thread Evolution serger brings you the latest evolution in threading technology with ExtraordinAir™ threading. With just one push of a button, ExtraordinAir takes your thread through all three loopers at once, instantly, with a gust of air. Plus, you can thread the Evolution in any order. Eliminate tensions and puckering with the patented Automatic Thread Delivery System™. Combine chain and overlock stitches to form up to 8-thread stitches.

For the Love of Sewing.



### Technology Features

- ExtraordinAir™ Threading
- Automatic Thread Delivery System
- Pure Lighting with 3 LED lights
- Full-Featured Differential Feed
  - 2 to 1 Ratio - gathering
  - 3 to 4 Ratio - stretching

### Convenience Features

- Built-in thread cutter
- Electronic foot control
- Snap on, multi-purpose presser foot
- Built-in accessory storage
- Built-in ribbon/tape guide
- Easy full-color threading chart

### Advanced Serging Features

- Exclusive Wave Stitch and Reverse Wave Stitch for additional stitch options
- Serging options from 2 to 8 threads
- Chain/cover stitch functions include single, double and triple cover stitch
- Overlock stitch functions to seam and encase fabric edges

- Flatlock stitch functions for seaming or decorative effects
- Heavy duty cutting system handles thick fabrics with ease
- Automatic rolled hem stitch functions create a professional finish
- Dial adjustable stitch width: 1.5 - 7.5mm, up to 16mm wide on Expressive stitches
- Dial adjustable stitch length: 0.75 - 4mm
- Dial adjustable built-in rolled hem
- Side thread cutter
- Up to 1,500 stitches per minute

### Other

- Household Needle System
  - HAx1SP
  - 130/705H
  - ELx705CF
- Warranty (25 yrs. Limited, 10 yrs. parts, 5 yrs. electrical, 1 yr. labor)

### Optional Accessories

- |  |           |
|--|-----------|
| • Beading Foot   | BLE8-BF   |
| • Belt Loop Binder 3/4"  | BLE8-S12  |
| • Belt Loop Binder 1-1/2"  | BLE8-S11  |
| • Blindhem Foot  | BLE8-BLHF |
| • Clear Foot   | BLE8-CLF  |
| • Cording Foot   | BLE8-CF   |
| • Double Fold Bias Binder 28mm                                       | BLE8-S3   |
| • Double Fold Bias Binder 36mm                                       | BLE8-S2   |
| • Elastic Foot   | BLE8-EF   |
| • Elastic Gatherer 7.5mm   | BLE8-EG7  |
| • Elastic Gatherer 10mm  | BLE8-EG10 |
| • Elastic Gatherer 13mm  | BLE8-EG13 |
| • Fabric Guide   | BLE8-FG   |
| • Gathering Guide  | BLE8-GG   |
| • Lace Applicator Foot   | BLE8-LF   |
| • Pintuck Foot with Guide  | BLE8-PTF  |
| • Plain Hemmer 1/4"  | BLE8-S7   |
| • Plain Hemmer 1/2"  | BLE8-S6   |
| • Ruffling Foot  | BLE8-RF   |
| • Single Downturn Feller 1/4"  | BLE8-S10  |
| • Single Downturn Feller 5/8"  | BLE8-S8   |
| • Single Downturn Feller 1"  | BLE8-S9   |
| • Single Fold Bias Binder 28mm                                       | BLE8-S4   |
| • Single Fold Bias Binder 40mm                                       | BLE8-S5   |
| • Inspirational Guide - Available from your local Baby Lock Retailer |           |
| • Gold Standard Comprehensive Care Program (available in U.S.)       |           |

800-422-2952

www.babylock.com

LBSP-BLE8W2

8/09



**FOR THE LOVE OF SEWING**